

# Reasonable price for CRM - CRM-HA50 CRM-HA/HB Series Motor for Eindhoven Importers

CRM series' inner curve piston hydraulic motor is what we design for high-end application. With advantage of hollow rotor, CRM motor can be mounted with brake, speed encoder, and some special equipments mounted through the center of motor, according to the user's requirements. It shows its striking features of high pressure endurance, stability at low speed, and high output torque in various inferior working conditions.

Main characteristics:

1. Good anti-shock capability and stability;
2. Stable speed switch; brake available;
3. Enable free running working condition;
4. Multi-mounting options; hollow shaft design;
5. Large output torque; wide speed range; directly replace combined devices of high speed motor and gearbox; compact structure;
6. Stable performance in low speed;
7. Higher mechanical and volumetric efficiency;
8. Reversible rotation;
9. Higher power-mass ratio;
10. Higher reliability; easy maintenance;

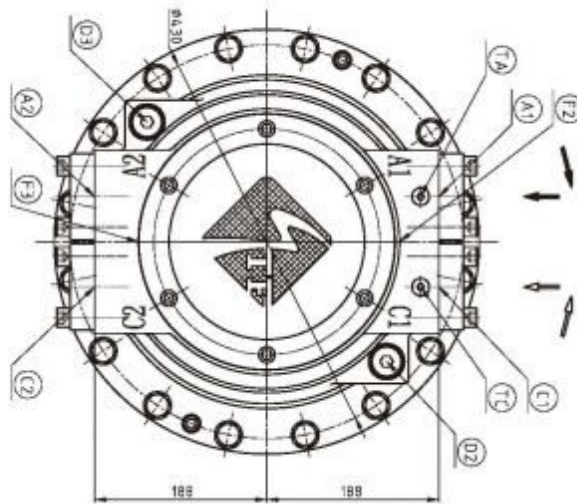
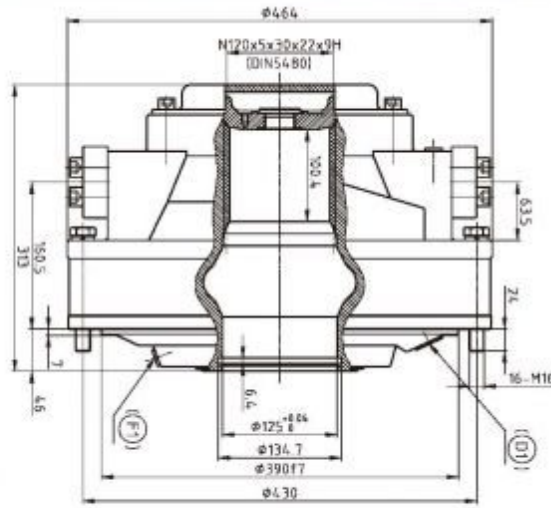
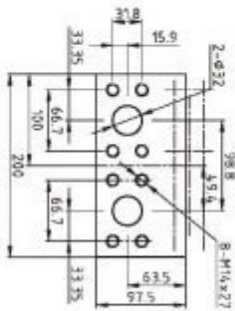
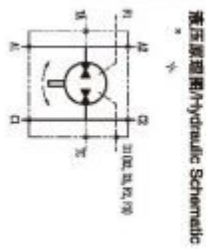
TYPE	Displacement	Unit Torque	Rated Pressure	Max. Pressure	Rated Torque	Rated Speed	Max. Speed	Weight ( Spline )	Weight ( Shrink Disc Coupling )
	ml/r	N.m/bar	bar	bar	N.m	r/min	r/min	Kg	Kg
HA50-20	1256	20	250	315	5000	340	340	175	203
HA50-25	1570	25	250	315	6250	298	340		

HA50-32	2010	32	250	315	8000	238	340		
HA50-40	2512	40	250	315	10000	196	298		
HA50-5	3140	50	250	315	12500	170	238		

# CRM-HA50 系列/ CRM-HA50 Serie



CRM-HA50 外形及安装尺寸/ CRM-HA50 Installation Dimensions



接口尺寸/Connection	
主接口/A	主接口/C
Main Conn./A	Main Conn./C
A1	A2
SAE 1 1/4"	SAE 1 1/4"
泄接口	泄接口
Drain Conn.	Drain Conn.
(D1)	(D2)
冲洗接口	冲洗接口
Flushing Conn.	Flushing Conn.
F1	F2
SAE 1 1/4"	SAE 1 1/4"
测试接口	测试接口
Test Conn.	Test Conn.
TA	TC
BSPP1/4"	BSPP1/4"

ITM

ITMS

STFC

STFD

CRM-HA

CRM-HB

CRM-PS

SMA6V

SMA2F

OMZ



Product link : <http://www.stffirm.com/?p=7295>