

Ordinary Discount

HPB-HPB5-6 HPB Series Motor Wholesale to Israel

- Feature

Description on Selection of Model

1. HPB hydraulic transmission device can work under high pressure.
2. The max permissible pressure of the housing is 0.8MPa. If you have any special requirements, please contact the manufacturer.
3. Hydraulic oil: recommend using high quality, anti-foaming and anti-oxidation mineral hydraulic oil. The ideal working oil temperature is 30°C to 50°C and the permissible oil temperature is between -20°C to 80°C. When oil temperature is lower than 10°C, Low-freezing hydraulic oil must be used. The viscosity of hydraulic oil is between 40-60 CST centistokes and the permissible viscosity is 5-300 CST centistokes.
4. The recommended hydraulic oil filtering precision is 25 μm or higher;
5. The hydraulic transmission device can rotate in both directions; please see the details in the attached charts. If users require the equipment to rotate in opposite direction, please make notes when you place orders.
6. Positioning of oil drain: XHSC transmission device allows to be installed in any direction. To ensure the lubrication of all kinematic pair, it's required to fill hydraulic oil into the motor before Working. The selection of position of oil drain port must be able to ensure that the housing is full of hydraulic oil when it operates.
7. Selection of distributor: All sorts of hydraulic transmission device can select to use the distributors of various specifications according to the requirements of different working conditions. The principle for selection of distributor: to select distributor according to the using pressure, rotation speed, flow, connecting method and the requirements of the integrated valve group; installation of distributor: the direction of oil inlet and outlet of distributors allows to rotate with interval of 72° around the external installation and connection location. However, when the distributor is rotated while the bolt is released, be careful not to damage the seal function of plane O-ring.

- Technical Parameters

型号 Model	总排量 Displacement (ml/r)	额定扭矩 Rated Torque (N.m)		转速范围 Speed range (r/min)	总效率 Total efficiency	液压马达型号 Hydraulic motor model	行星减速机型号 Planetary gearbox	制动器型号 Brake
		16MPa	20MPa					
HPB5 6-12000	12320	27067	33834	0-14	0.88-0.9	HSM4-600	C5 6-20	Z5
HPB5 6-16000	15860	34918	43648	0-14	0.88-0.9	HSM4-800	C5 6-20	Z5
HPB5 6-18000	18080	39706	49632	0-14	0.88-0.9	HSM4-900	C5 6-20	Z5
HPB5 6-20000	20440	45056	56320	0-14	0.88-0.9	HSM4-1000	C5 6-20	Z5
HPB5 6-22000	22204	48885	61106	0-10	0.88-0.9	HSM4-800	C5 6-28	Z5
HPB5 6-25000	25312	55587	-	0-10	0.88-0.9	HSM4-900	C5 6-28	Z5
HPB5 6-28000	28616	63078	-	0-10	0.88-0.9	HSM4-1000	C5 6-28	Z5

注：如客户需要其它速比和其它输出形式，请与本公司联系。

Note: If the customer need other speed ratio and other output form, please contact with us.

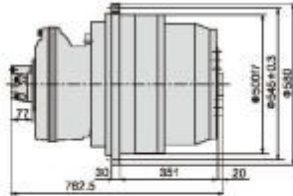
- Dimensions

HPB5 6系列/ HPB5 6 Serie

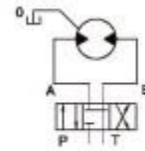


HSM
HPB

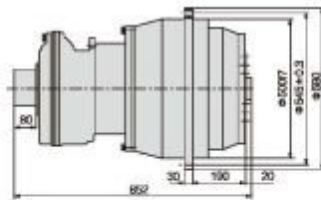
无制动器 Without brake



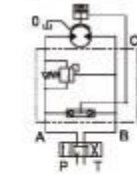
液压原理图
Hydraulic schematic diagram



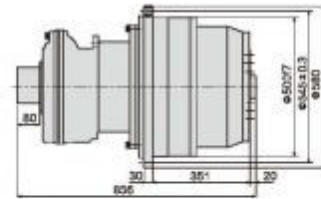
带制动器(外置式) With brake and external installation



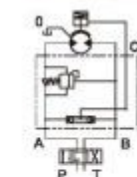
液压原理图
Hydraulic schematic diagram



带制动器(内置式) With brake and internal installation

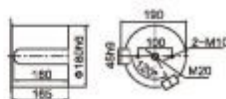


液压原理图
Hydraulic schematic diagram



输出轴形式 Shaft dimensions

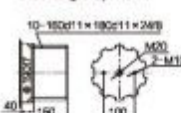
日型平键输出
Flat key B



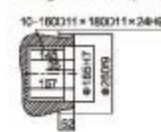
C型螺纹法兰输出
Threaded flange C



A型矩形花键输出
Rectangle spline A



I型内花键输出
Rectangle internal spline I



型号 Model	总排量 Displacement (ml/r)	额定扭矩 Rated Torque (K.m) 16MPa 20MPa	转速范围 Speed range (r/min)	总效率 Total efficiency	液压马达型号 Hydraulic motor model	行星减速机型号 Planetary gearbox	制动器型号 Brake
HPB5 6-12000	12320	27067	33834	0-14	0.88-0.9	HSM4-600	CS 6-20
HPB5 6-16000	15860	34918	43648	0-14	0.88-0.9	HSM4-800	CS 6-20
HPB5 6-18000	18080	39706	49632	0-14	0.88-0.9	HSM4-900	CS 6-20
HPB5 6-20000	20440	45056	56320	0-14	0.88-0.9	HSM4-1000	CS 6-20
HPB5 6-22000	22204	48865	61106	0-10	0.88-0.9	HSM4-800	CS 6-28
HPB5 6-25000	25312	55587	-	0-10	0.88-0.9	HSM4-900	CS 6-28
HPB5 6-28000	28616	63078	-	0-10	0.88-0.9	HSM4-1000	CS 6-28

注: 如客户需要其它速比和其它输出形式, 请与本公司联系。
Note: If the customer need other speed ratio and other output form, please contact with us.

Product link : <http://www.stffirm.com/?p=79025>