

## OMZ - OMZS OMZ Series Motor

- 1.It is simple structure, showing good performance under low speed,the unit weight power is much higher than other types;
- 2.Small volume,low weight,the displacement rang from80-800ml/r,wide rotational speed scope;
- 3.Shaft seal can bear high backpresssure.
- 4.The output shaft adopts tapered roller bearings that permint high axial and radial forces under short time overloading;
- 5.There are two forms distributions;with shaft distribution flow or with disc distribution flow in the wide of applications.

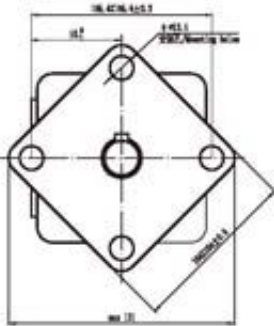
### Technical Parameters

型号	理论排量 (ml/r)	压力(Mpa)		扭矩(N.m)			最大功率 (Kw)	重量 (Kg)	最高转速 (r/min)
		额定压力	尖峰压力	额定扭矩	单位扭矩 (N.m/Mpa)				
OMZS80	80.6	16	22.5	190	11.9	20.1		30~988	
OMZS100	100.8	16	22.5	240	15	23.5		30~900	
OMZS125	125	16	22.5	310	19.4	23.2		30~720	
OMZS160	157.2	15	22.5	316	21.1	21.2		30~560	
OMZS200	200	12.5	22.5	400	32	18.3		30~450	
OMZS250	252	12.5	20	450	36	17.0		30~360	
OMZS315	314.5	12	18.5	560	46.7	18.9		30~280	
OMZS375	370	10	14	576	57.6	17		30~240	

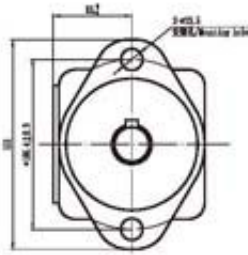
### Dimensions

安装联接尺寸/ Installation Dimensions

法兰/ Flange

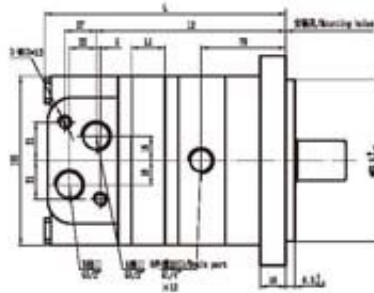


E4: 四孔法兰  
E4: Square mount, four holes



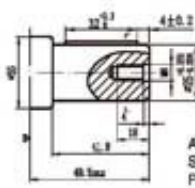
E2: 两孔菱形法兰  
E2: Rhomb mount, two holes

止口、油口外形/ Port and Drain Port

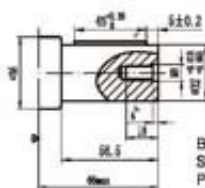
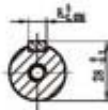


尺寸 Dimension	80	100	125	160	200	250	315	375
L	168	172	177	183.5	192	202	214	226
L1	18	20	25	31.5	40	50	62	74
L2	124	128	133	139.5	148	158	170	182

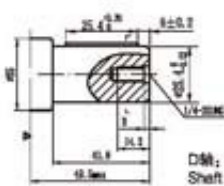
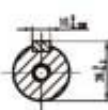
轴伸/ Output Shaft



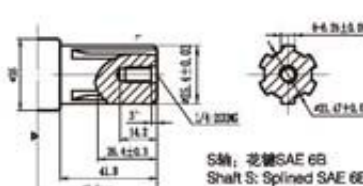
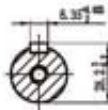
A轴: 圆柱轴 $\phi$ 25 平键: 8x7x32  
Shaft A: Cylindrical Shaft  $\phi$  25  
Parallel Key: 8x7x32



B轴: 圆柱轴 $\phi$ 32 平键: 10x8x45  
Shaft B: Cylindrical Shaft  $\phi$  32  
Parallel Key: 10x8x45



D轴: 圆柱轴 $\phi$ 25.4 平键: 6.35x6.35x25.4  
Shaft D: Cylindrical Shaft  $\phi$  25.4  
Parallel Key: 6.35x6.35x25.4



S轴: 花键SAE 6B  
Shaft S: Splined SAE 6B

订货信息/ Order Information

例: OMZS

1	2	3	4
排量/Disp.	法兰、止口/ Flange	轴伸/ Output Shaft	轴口、外接口/ Port And Drain Port
80 100 125 160 200 250 315 375	E2 2- $\phi$ 13.5 菱形法兰, 止口 $\phi$ 82.5x6.3 2- $\phi$ 13.5 Rhomb-flange, pilot $\phi$ 82.5x6.3	A $\phi$ 25轴, 平键8x7x32 Shaft $\phi$ 25 Parallel Key 8x7x32 B $\phi$ 32轴, 平键10x8x45 Shaft $\phi$ 32 Parallel Key 10x8x45	D G1/2" 模式2-M10, G1/4" G1/2" Manifold Mount 2-M10, G1/4"
	E4 4- $\phi$ 13.5 菱形法兰, 止口 $\phi$ 82.5x6.3 4- $\phi$ 13.5 Rhomb-flange, pilot $\phi$ 82.5x6.3	D $\phi$ 25.4轴, 平键6.35x6.35x25.4 Shaft $\phi$ 25.4 Parallel Key 6.35x6.35x25.4 S $\phi$ 25.4轴, 花键SAE 6B Shaft $\phi$ 25.4, Splined SAE 6B	M M22x1.5模式2-M10, M14X1.5 M22x1.5 Manifold Mount 2-M10, M14X1.5



Product link : <http://www.stffirm.com/?p=1226>