

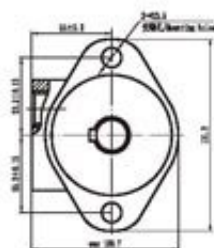
OMZ - OMZP OMZ Series Motor

- 1.It is simple structure, showing good performance under low speed,the unit weight power is much higher than other types;
- 2.Small volume,low weight,the displacement rang from80-800ml/r,wide rotational speed scope;
- 3.Shaft seal can bear high backpresssure.
- 4.The output shaft adopts tapered roller bearings that permint high axial and radial forces under short time overloading;
- 5.There are two forms distributions;with shaft distribution flow or with disc distribution flow in the wide of applications.

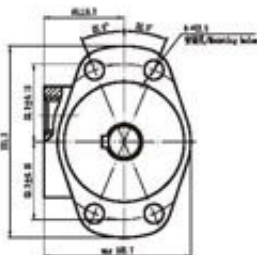
型号	理论排量 (ml/r)	压力(Mpa)		扭矩(N.m)			最大功率 (Kw)	重量 (Kg)	最高转速 (r/min)
		额定压力	尖峰压力	额定扭矩	单位扭矩 (N.m/Mpa)				
OMZP50	51.7	12.5	16.5	81	6.5	8.9		30~879	
OMZP80	77.7	12.5	16.5	129	10.3	11.8		30~740	
OMZP100	96.2	12.5	16.5	161	12.9	11.9		30~589	
OMZP125	117.9	12.5	16.5	202	16.2	11.8		30~475	
OMZP160	155.5	10	16.5	245	24.5	11.9		30~370	
OMZP200	189.9	10	16.5	286	28.6	10.9		30~296	
OMZP250	231	10	14	360	36	10.1		30~237	
OMZP315	311.7	8.5	12.5	406	47.8	8.6		30~189	
OMZP400	386.2	8.5	10.5	435	51.2	7.2		30~149	

安装联接尺寸/ Installation Dimensions

法兰/ Flange

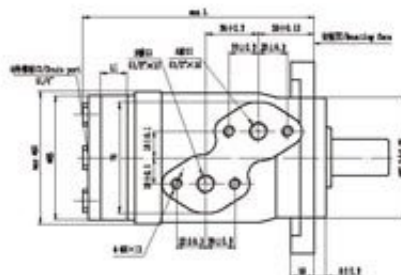


2: 两孔菱形法兰
2: Rhomb mount, two holes



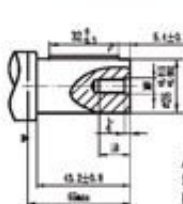
4: 四孔菱形法兰
4: Rhomb mount, four holes

止口、油口外形/ Port and Drain Port

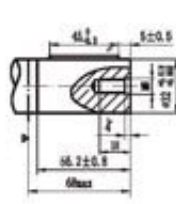
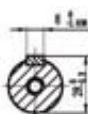


规格/Size	50	80	100	125	160	200	250	315	400
L	137	140.5	143	146	151	157	162	172	182
L1	7	10.5	13	16	21	26	32	42	52

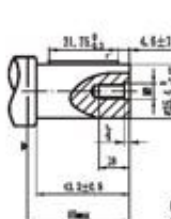
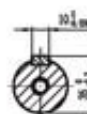
轴伸/ Output Shaft



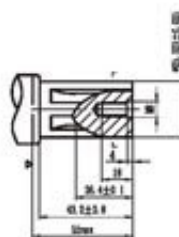
A轴: 圆柱轴 $\phi 25$ 平键: 8x7x32
Shaft A: Cylindrical Shaft $\phi 25$
Parallel Key: 8x7x32



B轴: 圆柱轴 $\phi 32$ 平键: 10x8x45
Shaft B: Cylindrical Shaft $\phi 32$
Parallel Key: 10x8x45



C轴: 圆柱轴 $\phi 25.4$ 平键: 6.35x6.35x31.75
Shaft C: Cylindrical Shaft $\phi 25.4$
Parallel Key: 6.35x6.35x31.75



E轴: 花键SAE 6B
Shaft E: Splined SAE 6B



订货信息/ Order Information

例: OMZP

1	2	3	4
规格/Dep.	法兰、止口/ Flange	轴伸/ Output Shaft	轴口、外油口/ Port And Drain Port
50 80 100 125 160 200	2- $\phi 13.6$ 菱形法兰, 止口 $\phi 82.5 \times 8$ 2- $\phi 13.5$ Rhomb-flange, pilot $\phi 82.5 \times 8$	A $\phi 25$ 轴, 平键 8x7x32 Shaft $\phi 25$, parallel key 8x7x32	D G1/2" 板式 4-M8, G1/4" G1/2" Manifold Mount 4-M8, G1/4"
250 315		4- $\phi 13.6$ 菱形法兰, 止口 $\phi 82.5 \times 8$ 4- $\phi 13.5$ Rhomb-flange, pilot $\phi 82.5 \times 8$	
		C $\phi 25.4$ 轴, 平键 6.35x6.35x31.75 Shaft $\phi 25.4$, parallel key 6.35x6.35x31.75	
		E $\phi 25.4$ 轴, 花键 SAE 6B Shaft $\phi 25.4$, splined key SAE 6B	



Product link : <http://www.stffirm.com/?p=1223>