

# Manufactur standard

## ITM - ITM02 ITM Series Motor Export to Rwanda

ITM series'hydraulic motor is a traditional radial piston motor what we produce for mid-pressure application.

With advanced processing center, inspection machines and assembly technology, it has unineachable performance in

demestic motors of same kind.

Main Characteristics:

- 1.Low noise due to its crankshaft & con-rod structure and cylinder & piston framework of low vibration frequency;
- 2.Steady performance at low speed; high starting torque;
- 3.Good reliability and less leakage due to the flat compensation distributor;special seals between piston and cylider guarantee its higher volumetric efficiency;
- 4.Enable reversible rotation and certain external radial & axial force on output shaft;

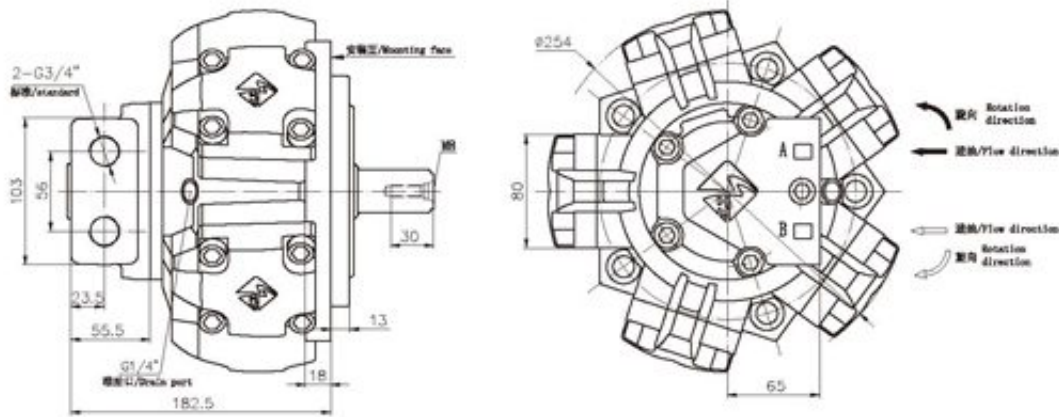
Type	Displacement (ml/r)	Pressure(Mpa)		Torque(N.m)			Max Power (Kw)	Weight (Kg)	Max Speed (r/min)
		Rated Pressur	Max Pressure	Rated Torque	Theoric Specific Torque (N.m/Mpa)				
ITM02-100	113	16	22	264	17	8	28	350	
ITM02-150	159	16	20	372	23	11		320	
ITM02-175	180	16	20	421	26	12		320	
ITM02-200	206	16	20	482	30	13		300	
ITM02-250	235	14	18	481	34	13		300	
ITM02-2	276	12	16	484	40	12		280	



# ITM02 系列/ ITM02 Serie



ITM02 外形及安裝尺寸/ ITM02 Installation Dimensions



ITM

ITMS

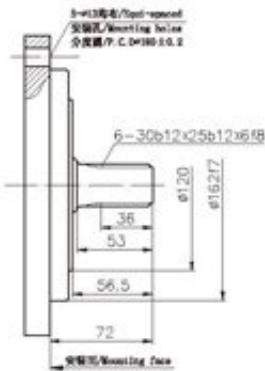
STFC

STFD

CRM

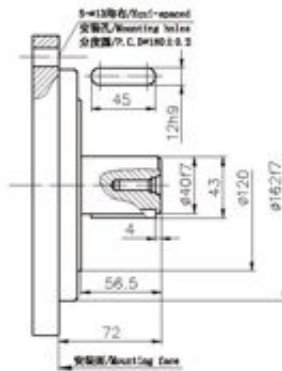
OMZ

标准外花键 : ITM02---  
Involute Spline



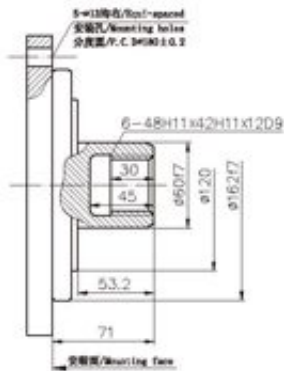
ITM02---SL<sub>1</sub>

标准平键 : ITM02---B  
Parallel Key

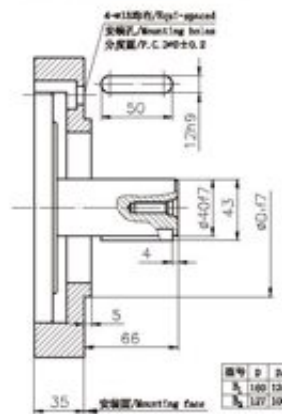
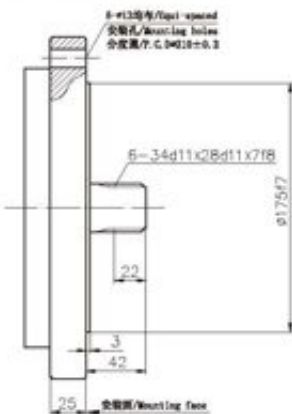


ITM02---B<sub>1</sub>, B<sub>2</sub>

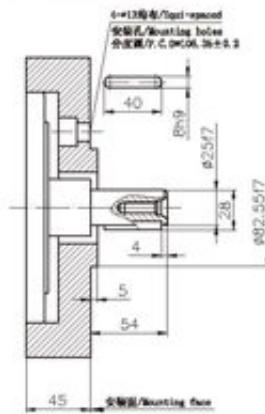
标准内花键 : ITM02---I  
Female Spline



ITM02---B<sub>3</sub>



型号	Φ	h
B <sub>1</sub>	100	136
B <sub>2</sub>	127	160





Product link : <http://www.stffirm.com/?p=11352>