

ITM - ITM31 ITM Series Motor

ITM series hydraulic motor is a traditional radial piston motor what we produce for mid-pressure application.

With advanced processing center, inspection machines and assembly technology, it has unimpeachable performance in

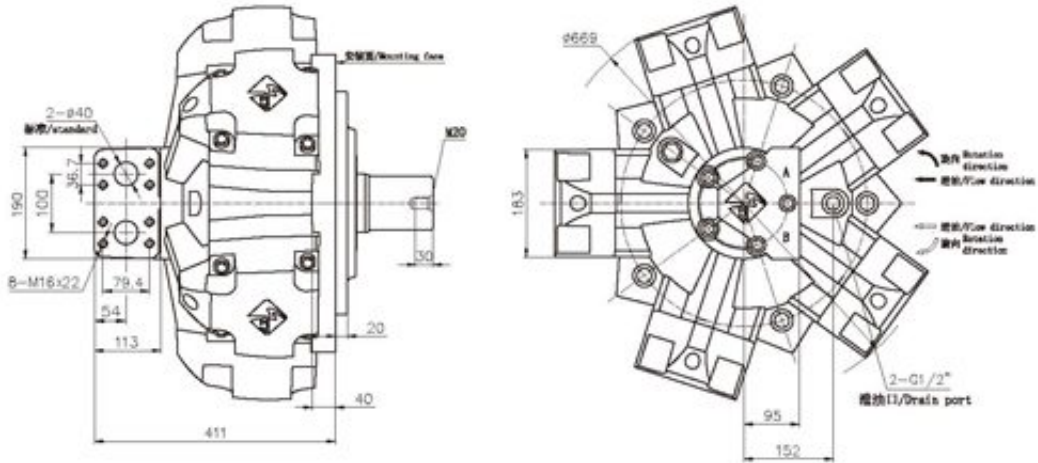
domestic motors of same kind.

Main Characteristics:

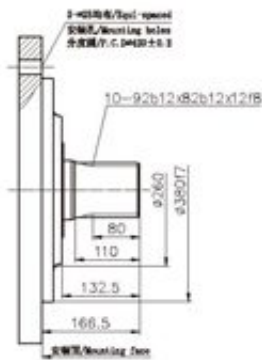
- 1.Low noise due to its crankshaft & con-rod structure and cylinder & piston framework of low vibration frequency;
- 2.Steady performance at low speed; high starting torque;
- 3.Good reliability and less leakage due to the flat compensation distributor;special seals between piston and cylinder guarantee its higher volumetric efficiency;
- 4.Enable reversible rotation and certain external radial & axial force on output shaft;

Type	Displacement (ml/r)	Pressure(Mpa)		Torque(N.m)			Max Power (Kw)	Weight (Kg)	Max Speed (r/min)
		Rated Pressure	Max Pressure	Rated Torque	Theoric Specific Torque (N.m/Mpa)				
ITM31-2500	2553	18	22	6722	373	120	298	200	
ITM31-2800	2683	18	22	7064	392	126		200	
ITM31-3000	3063	16	22	7169	448	115		180	
ITM31-3150	3218	16	22	7532	471	121		180	
ITM31-3500	3462	16	20	8103	506	115		160	
ITM31-4000	4152	16	20	9718	607	138		160	
ITM31-4500	4522	16	20	10584	661	151		160	
ITM31-5000	4828	14	18	9887	706	141		160	

ITM31 外形及安装尺寸/ ITM31 Installation Dimensions

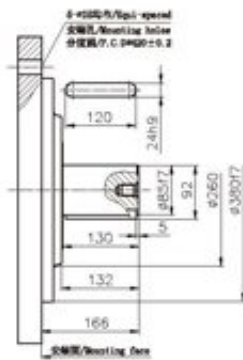


标准外花键 : ITM31--
Involute Spline



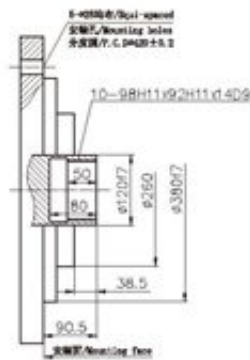
ITM31--SI₇

标准平键 : ITM31--B
Parallel Key

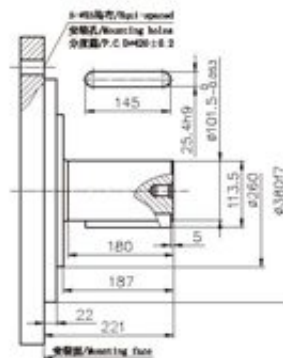
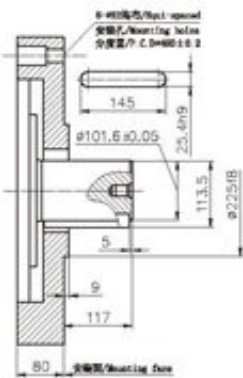
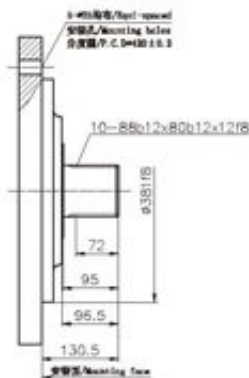


ITM31--B₉

标准内花键 : ITM31--I
Female Spline



ITM31--B₁₀





Product link : <http://www.stffirm.com/?p=1099>