

# High Quality Industrial Factory

## STFC - STFC080&100 STFC Series Motor to Cologne Importers

STFC series high pressure motor is the quintessence of our years' experience in technique and market. It is designed based on hydrostatic balance technology, and grows gradually to be mature after years' continuous inspection and improvement.

Main characteristics:

1. High mechanical efficiency and starting torque due to the hydrostatic balance built between the piston, con-rod and eccentric sets which reduces the friction between con-rod and eccentric sets, also reduces the side force of pistons, and increases contact pressure ratio between the ball and socket of piston ;

2. Good sealing capability, less leakage due to applying hydrostatic balance shaft distributor to prevent the shaft tilted; enables continuous working in high pressure condition (Max. pressure up to 29MPa);

3. Less leakage and higher volumetric efficiency due to the special seal rings;

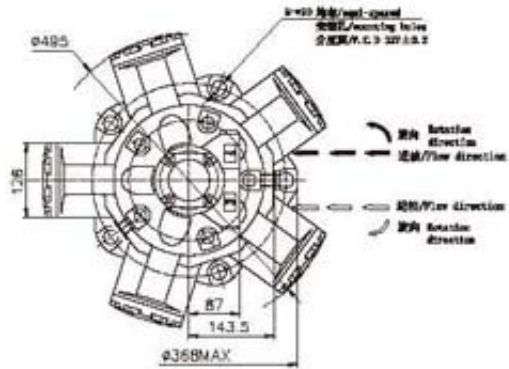
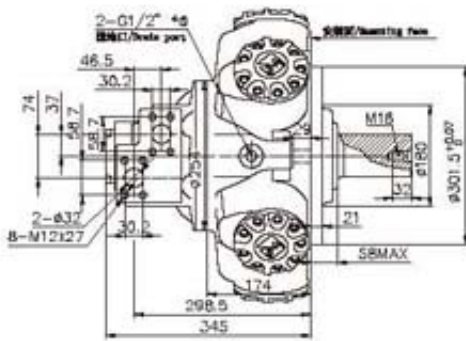
4. Longer overall service life due to the special materials and advanced treatment process in main driving components ;

5. Ideal replacement of STAFFA due to their same installation data and similar technical performance.

TYPE	Theory Displacement	Pressure		Torque		Max.Speed	Ra
		Rated Pressure	Max.Pressure	Rated Torque	Unit Torque		
	ml/r	MPa	MPa	N.m	N.m/MPa	r/min	
STFC080-1000	988	23	29	3324	145	300	
STFC080-1100	1088	23	29	3661	159	300	
STFC080-1250	1237	23	29	4162	181	280	
STFC080-1400	1385	23	29	4660	203	260	
STFC100-1600	1630	23	29	5484	238	240	

**STFC080 外形及安装尺寸/ STFC080 Installation Dimensions**

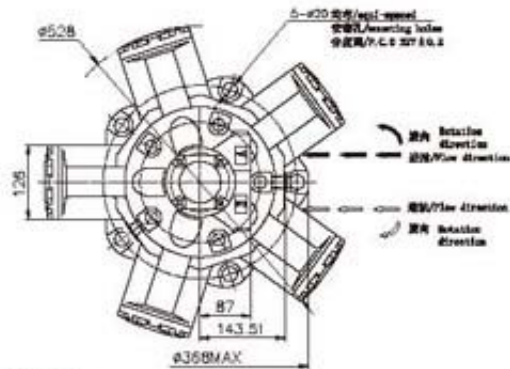
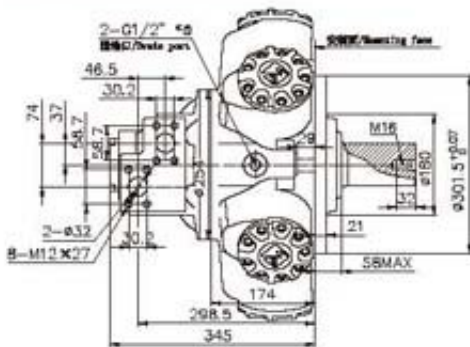
进出油口为F01的安装尺寸/With F01 Distributor



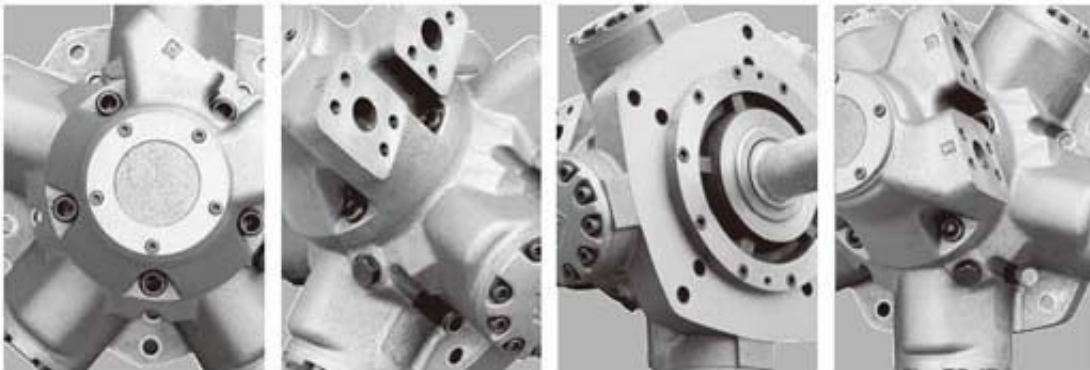
\*①可适配UNF3/4"-16接头/Option:UNF3/4"-16

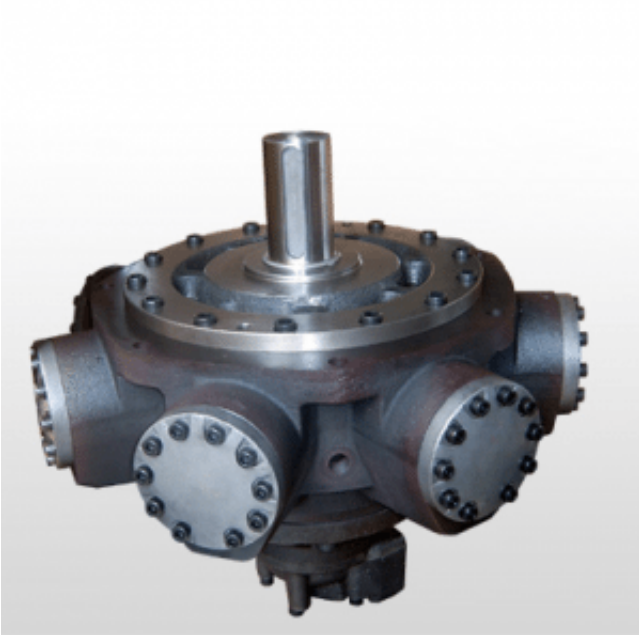
**STFC100 外形及安装尺寸/ STFC100 Installation Dimensions**

进出油口为F01的安装尺寸/With F01 Distributor



\*①可适配UNF3/4"-16接头/Option:UNF3/4"-16





Product link : <http://www.stffirm.com/?p=14392>