

Free sample for CRM - CRM-HB560 CRM-HA/HB Series Motor for Morocco Factory

CRM series' inner curve piston hydraulic motor is what we design for high-end application. With advantage of hollow rotor, CRM motor can be mounted with brake, speed encoder,

and some special equipments mounted through the center of motor, according to the user's requirements. It shows its striking features of high pressure

endurance, stability at low speed, and high output torque in various inferior working conditions.

Main characteristics:

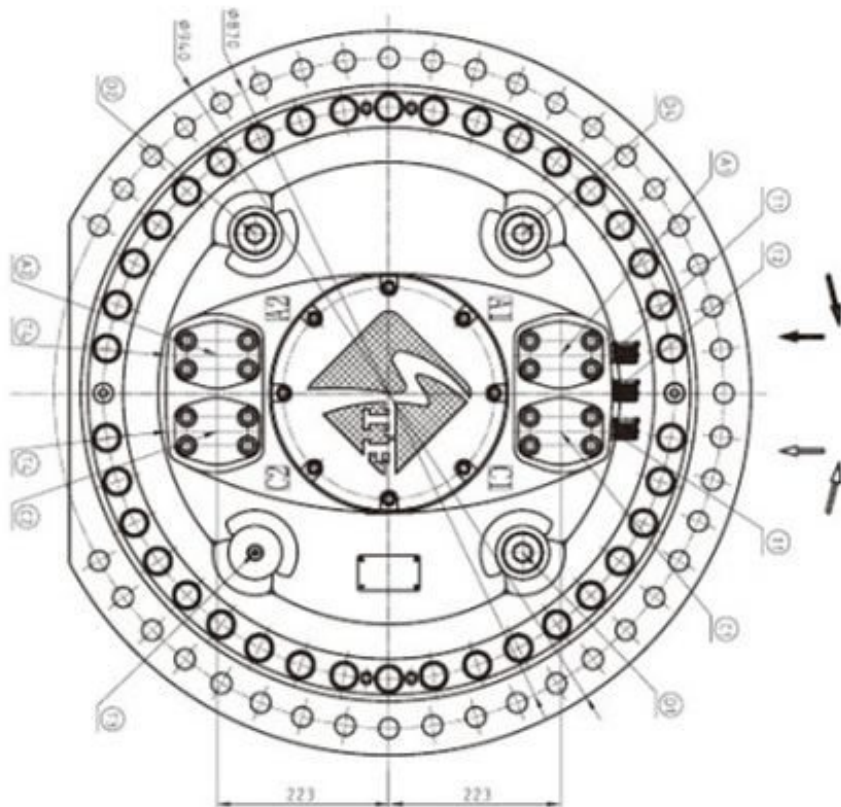
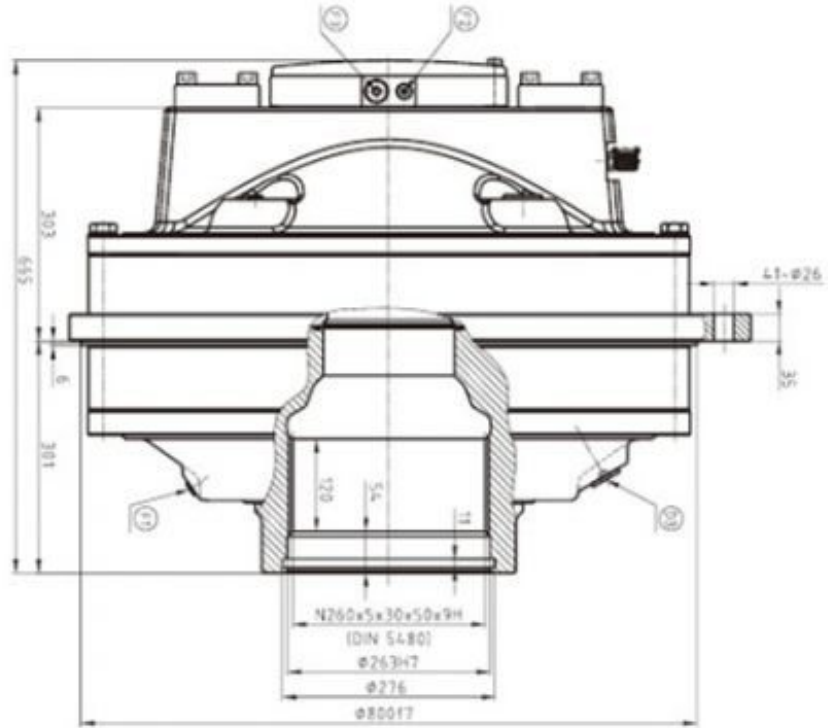
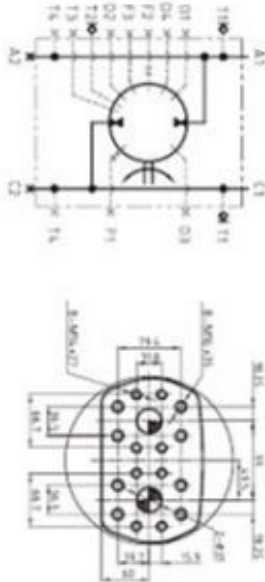
1. Good anti-shock capability and stability;
2. Stable speed switch; brake available;
3. Enable free running working condition;
4. Multi-mounting options; hollow shaft design;
5. Large output torque; wide speed range; directly replace combined devices of high speed motor and gearbox; compact structure;
6. Stable performance in low speed;
7. Higher mechanical and volumetric efficiency;
8. Reversible rotation;
9. Higher power-mass ratio;
10. Higher reliability; easy maintenance;

TYPE	Displacement	Unit Torque	Rated Pressure	Max. Pressure	Rated Torque	Rated Speed	Max
	ml/r	N.m/bar	bar	bar	N.m	r/min	r/
HB560-440	27600	440	250	315	110000	42	
HB560-480	30200	480	250	315	120000	41	
HB560-520	32700	520	250	315	130000	35	
HB560-560	35200	560	250	315	140000	34	

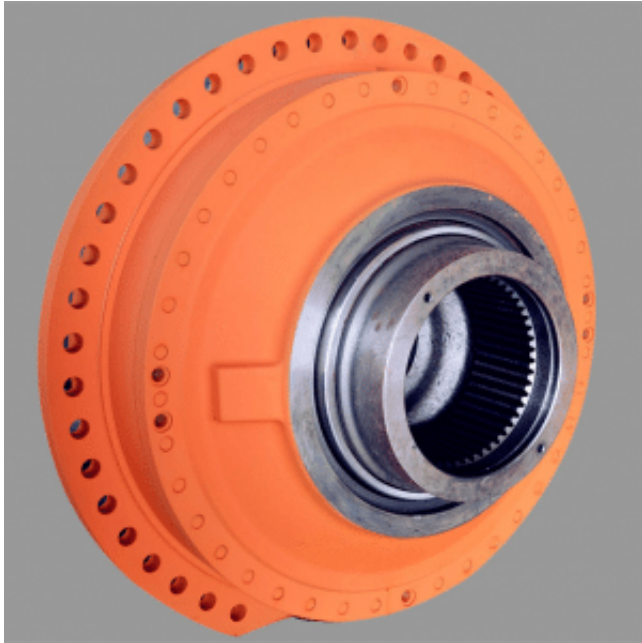
CRM-HB560 系列/ CRM-HB560 Serie



CRM-HB560 外形及安装尺寸/ CRM-HB560 Installation Dimensions



主油口 A	主油口 C	泄油口	冲洗油口	测压口
Main Conn. A	Main Conn. C	Drain Conn.	Flushing Conn.	Test Conn.
A1	C1	D1 D2 D3 D4	F1 F2 F3 F4	T1 T2 T3 T4
SAE 1 1/4" ASAE 1 1/2"	BSP 1 1/4"	BSP 1 1/4"	BSP 1/4"	BSP 1/4"



Product link : <http://www.stffirm.com/?p=4492>