

CRM - CRM-HB840 CRM-HA/HB Series Motor

CRM series' inner curve piston hydraulic motor is what we design for high-end application. With advantage of hollow rotor, CRM motor can be mounted with brake, speed encoder,

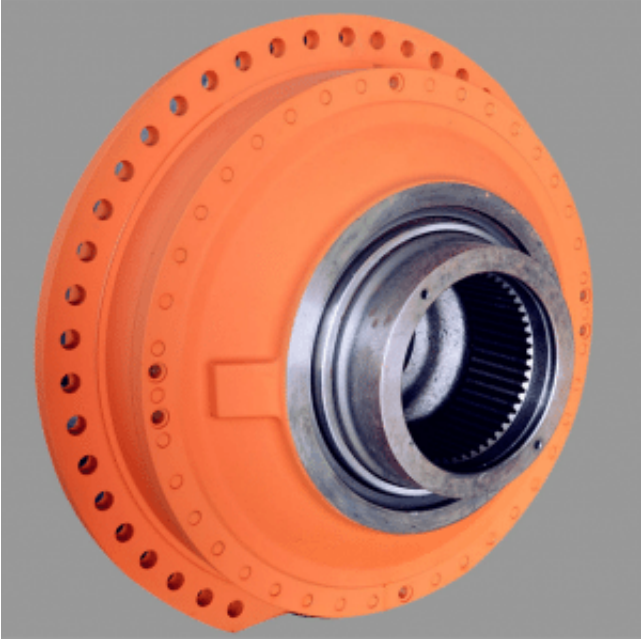
and some special equipments mounted through the center of motor, according to the user's requirements. It shows its striking features of high pressure

endurance, stability at low speed, and high output torque in various inferior working conditions.

Main characteristics:

1. Good anti-shock capability and stability;
2. Stable speed switch; brake available;
3. Enable free running working condition;
4. Multi-mounting options; hollow shaft design;
5. Large output torque; wide speed range; directly replace combined devices of high speed motor and gearbox; compact structure;
6. Stable performance in low speed;
7. Higher mechanical and volumetric efficiency;
8. Reversible rotation;
9. Higher power-mass ratio;
10. Higher reliability; easy maintenance;

TYPE	Displacement	Unit Torque	Rated Pressure	Max. Pressure	Rated Torque	Rated Speed	Max
	ml/r	N.m/bar	bar	bar	N.m	r/min	r/
HB840-600	37700	600	250	315	150000	26	
HB840-640	40200	640	250	315	160000	24	
HB840-680	42700	680	250	315	170000	23	
HB840-720	45200	720	250	315	180000	21	
HB840-760	47800	760	250	315	190000	20	
HB840-800	50300	800	250	315	200000	20	
HB840-840	52800	840	250	315	210000	18	



Product link : <http://www.stffirm.com/?p=1178>