

2017 High quality ITM - ITM16 ITM Series Motor Export to Armenia

ITM series'hydraulic motor is a traditional radial piston motor what we produce for mid-pressure application.

With advanced processing center, inspection machines and assembly technology, it has unimpeachable performance in

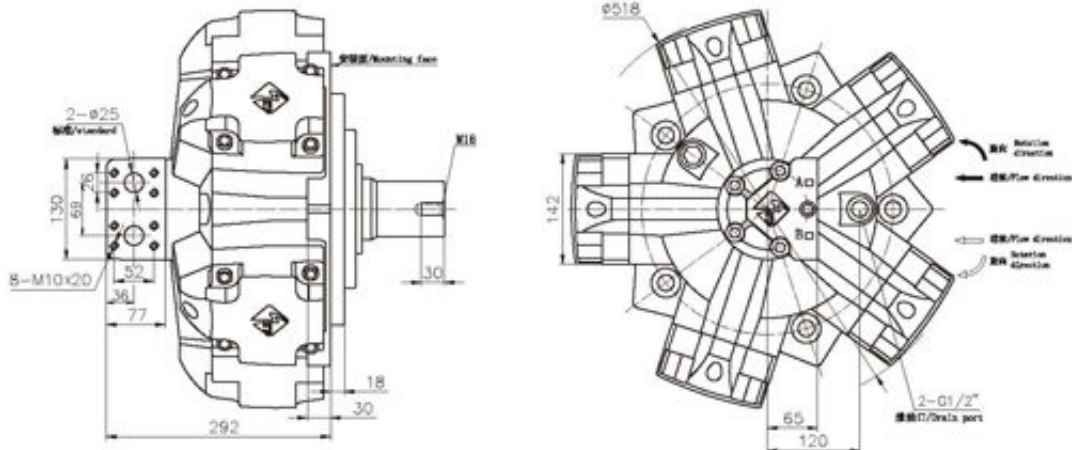
demestic motors of same kind.

Main Characteristics:

- 1.Low noise due to its crankshaft & con-rod structure and cylinder & piston framework of low vibration frequency;
- 2.Steady performance at low speed; high starting torque;
- 3.Good reliability and less leakage due to the flat compensation distributor;special seals between piston and cylider guarantee its higher volumetric efficiency;
- 4.Enable reversible rotation and certain external radial & axial force on output shaft;

Type	Displacement (ml/r)	Pressure(Mpa)		Torque(N.m)			Max Power (Kw)	Weight (Kg)	Max Speed (r/min)
		Rated Pressur	Max Pre ssure	Rated Torque	Theoric Specific Torque (N.m/M pa)				
ITM16-1 400	1413	16	22	3343	209	74	170	250	
ITM16-1 600	1648	16	22	3899	244	87		250	
ITM16-1 800	1814	16	20	4292	268	84		220	
ITM16-2 000	2034	14	18	4211	301	75		200	
ITM16-2 400	2267	14	18	4693	335	75		180	

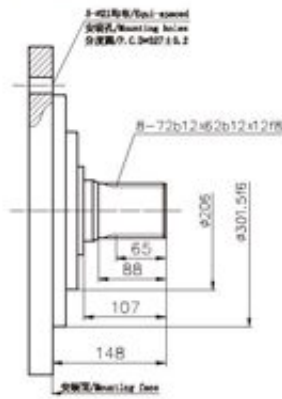
ITM16 外形及安装尺寸/ ITM16 Installation Dimensions



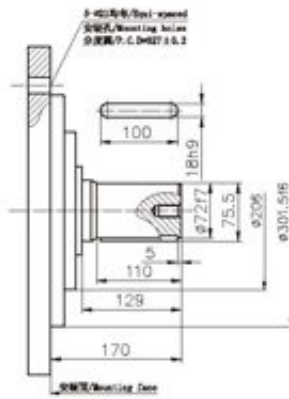
标准外花键 : ITM16→
Involute Spline

标准平键 : ITM16→B
Parallel Key

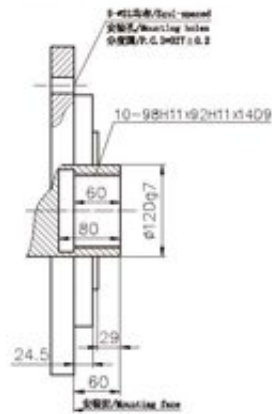
标准内花键 : ITM16←
Female Spline



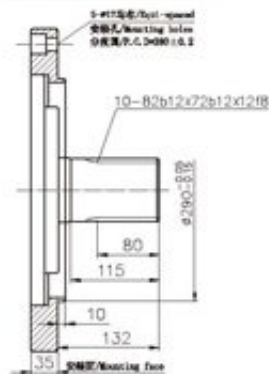
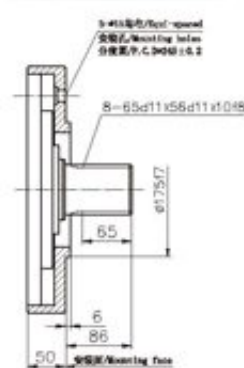
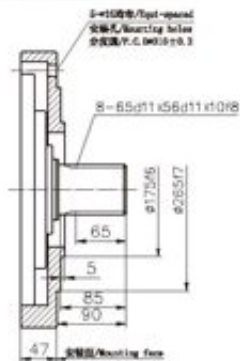
ITM16→SL₄



ITM16→SM₄



ITM16←N





Product link : <http://www.stffirm.com/?p=13973>